

AHS

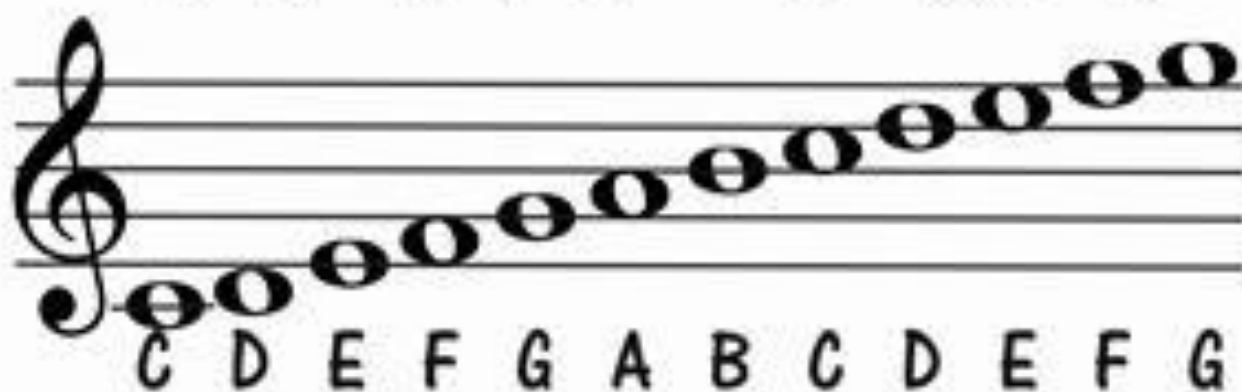
GCSE MUSIC

AOS 2

'Killer Queen'

NAME:

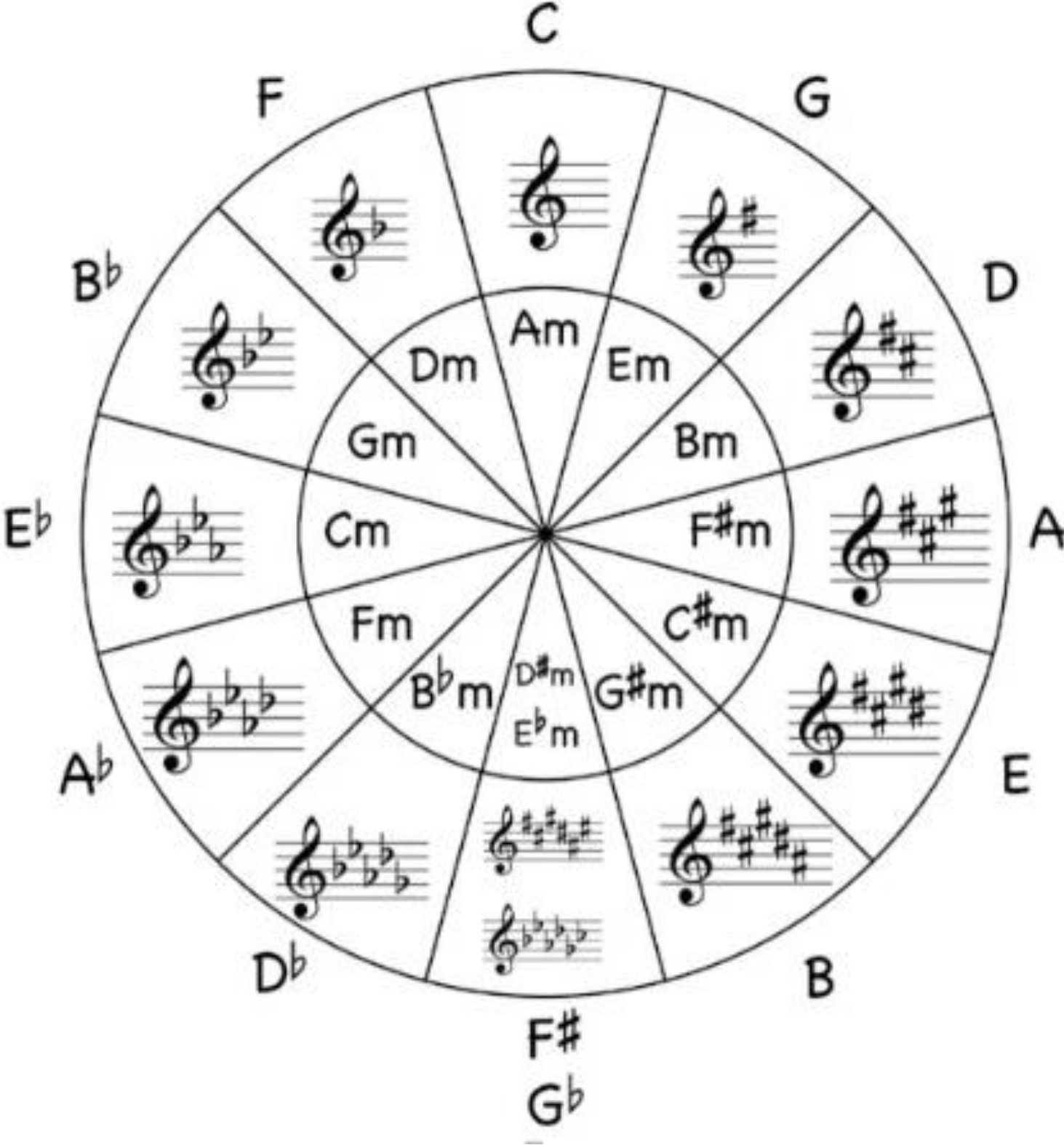
Treble Clef Notes



Bass Clef Notes



Father Charles Goes Down And Ends Battle



Battle Ends And Down Goes Charles Father

TERM	MEANING
Duration	
Dynamics	
Timbre/Sonority	
Pitch	
Tempo	
Texture	
Genre	
Rhythm	
Structure	
Melody	
Accompaniment	
Composer	
Era	
Harmony/Chords	
Tonality	
Ensemble	
Instrumentation	
Improvisation	
Time Signature/ metre	
Syncopation	

'Killer Queen' by Queen

Verse Cm Bb

4 Cm Bb Eb Eb Bb

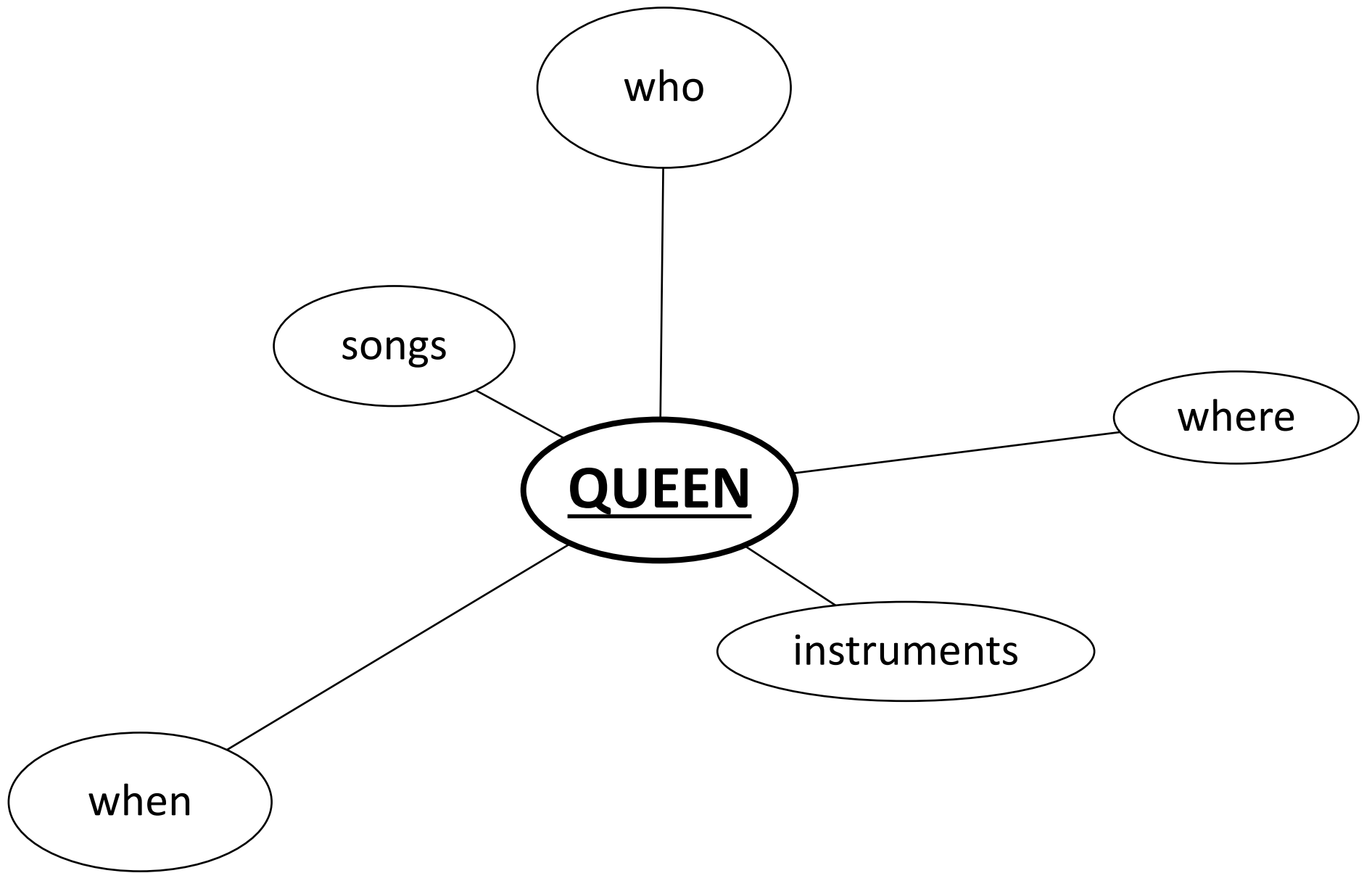
7 Eb Ab Abm Eb Bb Bb7

11 G Cm Bb Eb D Gm F Chorus

14 Bb Dm Gm Dm Gm A7 Dm

17 G C Bb A Dm

20 G7 C Bb



Killer Queen – Introductory listening questions.

1. How does the song start?
2. Name the instruments you/ hear.
3. What is the time signature?
4. Which of these textures can you hear?
 - a. Monophony
 - b. Homophony
 - c. Polyphony
5. Describe the overall tonality?
 - a. Major
 - b. Minor
 - c. Atonal
 - d. Bitonal
6. Has this been recorded live or edited with effects in a studio? Give a reason.
7. How does the song end?
8. Do you like the song? Give 2 reason to justify your answer.

Instrumentation and Sonority (timbre)

Piano

1. Why are there 2 pianos?
2. What is a honky-tonk piano?
3. Describe how the pianos are played:
4. Where is the bass guitar on the score/in the recording?

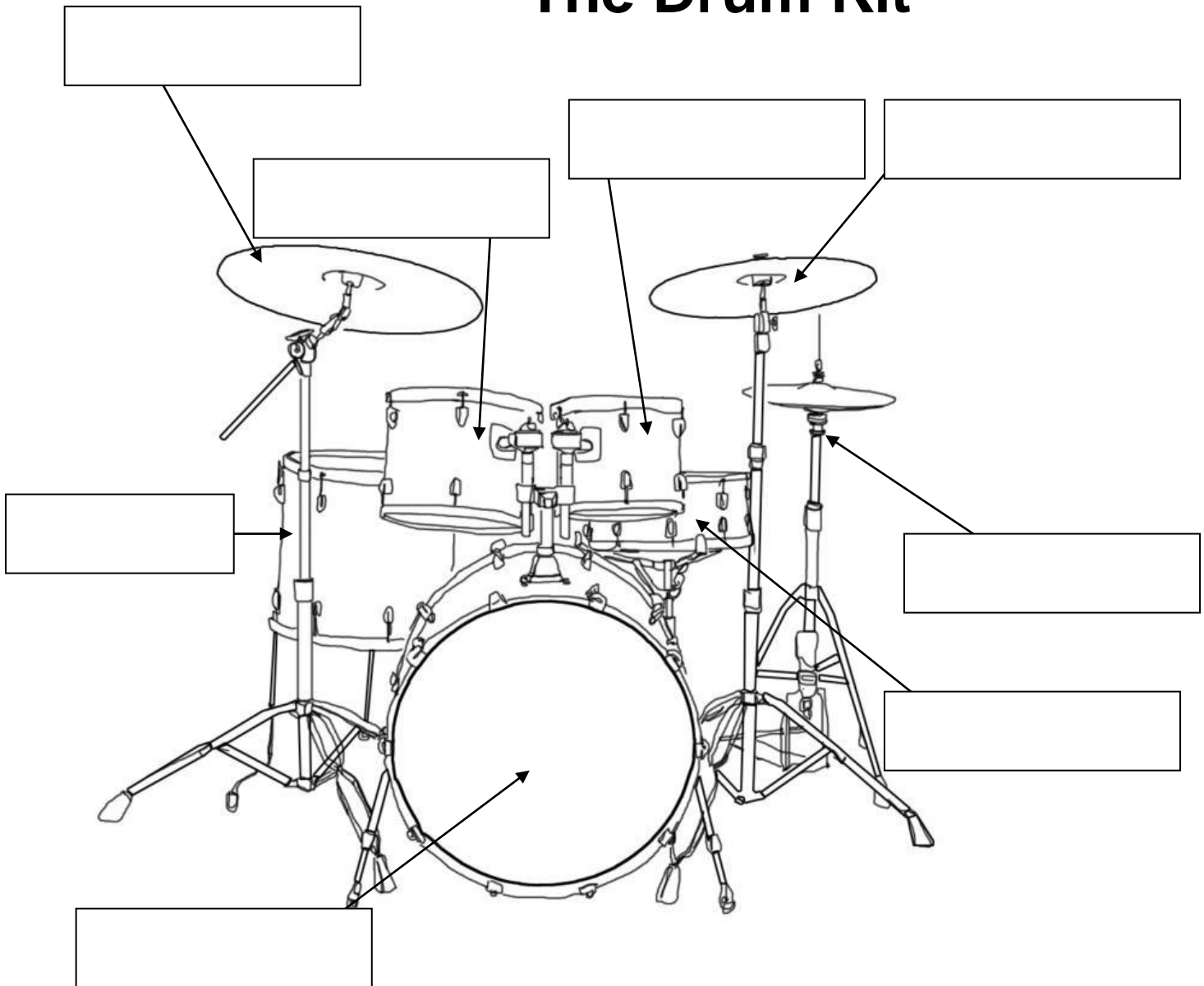
Vocals

5. Where are the backing vocals most prominent in the song?
6. Can you remember from 'Wicked' what VOCABLES are? Where does this occur?
7. Look at bar 31. How many vocal parts are there shown? How is this possible?
8. How would you describe the PITCH of Freddie Mercury's vocals?
9. How does Freddy Mercury sing the X notes in bar 38?
10. How does Freddie Mercury sing the word "Queen" in the choruses?

Percussion

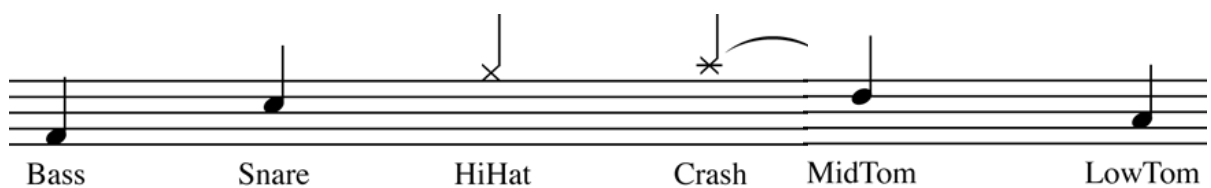
11. Other than the finger clicks at the start, what are the only other 2 percussion instruments that are used?

The Drum Kit


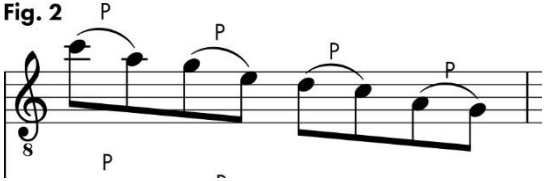

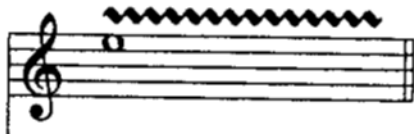
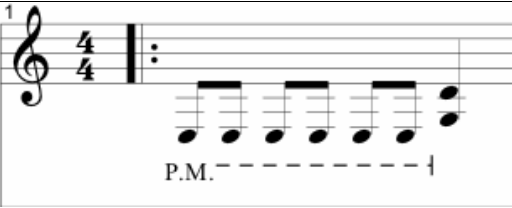


Identify the parts on the drum kit using the words in the box.

Hi-Hat	Bass Drum	High Tom	Crash Cymbal
Floor Tom	Ride Cymbal	Snare Drum	Medium Tom



Instrumentation – Guitar techniques:

How it appears in score	Technique	Description	Bar(s)
			
<p>Fig. 2</p> 			
			
			
			

INSTRUMENT EFFECTS:

Overdrive (bar) <https://www.youtube.com/watch?v=pkqjqOa7two&safe=active>

.....
.....
.....
.....
.....

Reverb (bar) https://www.youtube.com/watch?v=TZG2K0J_A3c&safe=active

.....
.....
.....
.....
.....

Delay/echo (bar) <https://www.youtube.com/watch?v=9LWRgA597O4&safe=active>

.....
.....
.....
.....
.....

Wah-wah (bar) <https://www.youtube.com/watch?v=Pw2VqxOt2jl&safe=active>

<https://www.youtube.com/watch?v=Fj7bKseGVgs&safe=active>

.....
.....
.....
.....
.....

Phaser/flanger (bar) <https://www.youtube.com/watch?v=OJfFt2i2Yd4>

.....
.....
.....
.....
.....

Music Technology

Queen were known for using lots of technology in the production process. They were keen to do this instead of using synthesisers which were popular at the time.

In 'Killer Queen' the following use of music technology can be heard:

- Much use of&..... , especially of the backing vocals (e.g. 73-74) and guitar parts (55-61). Also is used to help separate these parts.
 - Use of effects on the guitar, the main one being - throughout the track, creating the 'gritty' tone.
 - An effect used mainly on the vocals and slightly on the guitar throughout the entire track is which is used to create a sense of space.
 - Other effects include: the distinctive wobbling sound of clearly heard on the word laser-beam (17) in the vocal part.
 - At the start of Verse 3 (62), the guitar uses the effect.
 - Clever use of Positioning when recording the guitars to create different timbres/sonorities.
-
- Microphone
 - Distortion
 - Flanger/phaser
 - Multi-track recording
 - Reverb
 - Wah-wah
 - Panning
 - Over-dubbing

RHYTHM, METRE & TEMPO

1. What is the main time signature/metre?

-
- beats per bar --->
- are grouped in (dotted crotchet)
- Counting in dotted crotchets =
- This piece is in '..... compound time'
- This creates a jazzy feel = rhythm



2. There are a few points with a different time signature. Can you find what/where?

-
- This occurs in bars

3. What is the tempo marking? What does this mean?

-

For the majority of the song the piano creates/emphasises a more 4/4 feel.



But there are some areas where it emphasises the swing/shuffle rhythm of 12/8. Can you find where?



If the exam asks you to describe a 'rhythmic device/feature' of the piece, the top answer is always.....

Describe how you spot this (you saw lots of it in Wicked)

.....

.....

.....

.....

.....

.....

.....

ANACRUSIS =

.....

.....

.....

.....

.....

.....

♩ = 112

Vocals

Verse 1 Cm

She keeps a Mo - ët et Chan - don_

Piano

A musical score for a vocal and piano piece. The tempo is marked as quarter note = 112. The key signature has two flats (B-flat and E-flat) and the time signature is 3/8. The vocal line starts with a whole rest followed by a half note G4, quarter note A4, quarter note Bb4, quarter note C5, quarter note Bb4, quarter note A4, quarter note G4, quarter note F4, quarter note E4, quarter note D4. The piano accompaniment starts with a whole rest followed by a half note G3, quarter note A3, quarter note Bb3, quarter note C4, quarter note Bb3, quarter note A3, quarter note G3, quarter note F3, quarter note E3, quarter note D3.

We Wish You A Merry Christmas - hard (no labels)

VERSE

We wish you a mer - ry christ - mas we

wish you a mer - ry christ - mas we

A musical score for the song 'We Wish You A Merry Christmas'. The key signature has one flat (B-flat) and the time signature is 3/4. The first line of music is for the verse, starting with a quarter note G3, quarter note A3, quarter note Bb3, quarter note C4, quarter note Bb3, quarter note A3, quarter note G3, quarter note F3, quarter note E3, quarter note D3. The second line of music is a repeat of the first line, starting with a quarter note G3, quarter note A3, quarter note Bb3, quarter note C4, quarter note Bb3, quarter note A3, quarter note G3, quarter note F3, quarter note E3, quarter note D3.

Happy Birthday

For Easy Piano

Traditional
Arranged by Ben Dunnett

Moderato

1 2 1 4 3 1 2 1 5 4 1

Hap - py birth - day to you, hap - py birth - day to you, hap - py

f

1 4 4 3 2 1

5 5 3 1 2 1 4 3 1 2 1

birth - day dear ... - ..., hap - py birth - day to you!

1 5 4 2 1

Star Wars - main theme

A Section - main theme/

Bb Eb Bb Eb Bb

5 Ab F Bb Eb Bb Eb Bb Ab F

Recap Qu

1. Name of song studying.
2. Year it was released.
3. Instruments played in song.
4. Sections from song.
5. Name 3x guitar playing techniques.
6. Names 3x guitar pedals/effects.
7. What does overdubbing mean?
8. How many beats per bar?
9. How does the song start?
10. How does it end?
11. Name 3 parts of a standard drum kit.
12. How does the piano play most chords?
13. What is the BPM?
14. How would you classify Freddy's voice?


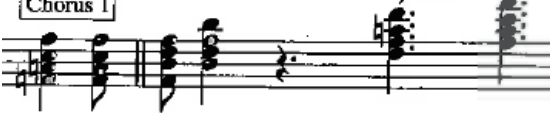





Melody match answers – once you have written a term in each definition box, use these terms and definitions to fill in the grid on the next page where you must match a musical example from the score eg. Syllabic = one note per syllable – find a pic of score that show it.










Definition	Definition
Moving up or down in semi-tones. Eg C, C#, D	Pitch remains the same.
Melody repeated with same shape, but higher or lower than before.	Pitch of melody is gets higher then lower, like an arch.
Notes of chord moving up and down following main melody line.	Spoken rather than sung.
Moving 1 note at a time eg C, D, E	Pitch of melody is gets lower.
Moving from 1 note to a note further away eg C, E	Pitch of melody gets higher.
The melody somehow representing/ reflecting the words eg singing about a mountain being high & singing very high at that point.	Sliding between 2 notes, therefore singing all the notes between as well.
1 note per word/syllable	1 part copying what another part has played.
Pitch range from lowest to highest note.	

TERMS:

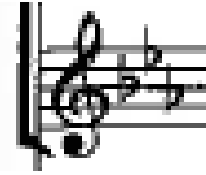
Wide tessitura	Imitation	Stepwise/conjunct	Parallel harmonie	Jumps
Arched pitch phrase	Parlando	Rising phrase	Static pitch	Syllabic
Descending/ falling phrase	Word painting	Sequence	Chromatic	portamento

Melody Match the correct term with its meaning and the example in the score. Some examples from the score cover more than 1 term so will be used more than once.

Term	Definition	Example in score
		Bar 4  in her pret - ty ca - bi-net.
		Bar 12-13  Ca - vi - ar and ci - ga-rettes, well versed in e - ti-quette,
		Bar 14-15 [Chorus 1]  She's a kill-er queen,
		Bar 4  in her pret - ty ca - bi-net.
		Bar 14-15 [Chorus 1]  She's a kill-er queen,
		Bar 17  la-ser beam.
		Bar 65  tem - po-ra-ri-ly
		Bar 14-15 [Chorus 1]  ly nice. She's a kill-er queen,

		<p>Bar 47-49</p> <p>Gtr. 1</p>  <p>Gtr. 3</p>  <p>Gtr. 4</p> 
		<p>Bar 38</p>  <p>fas - ti - di - ous and pre - cise..</p>
		<p>Bar 6</p>  <p>just like_ Ma-rie An-toi-nette.</p>
		<p>Bar 12</p>  <p>Ca - vi - ar___ and ci - ga-ettes,</p>
		<p>Bar 2-3</p>  <p>She keeps a Mo - ët et Chan - don_</p>
		<p>Bar 6</p>  <p>just like_ Ma-rie An-toi-nette.</p>
		<p>Bar 15</p>  <p>queen,___</p>

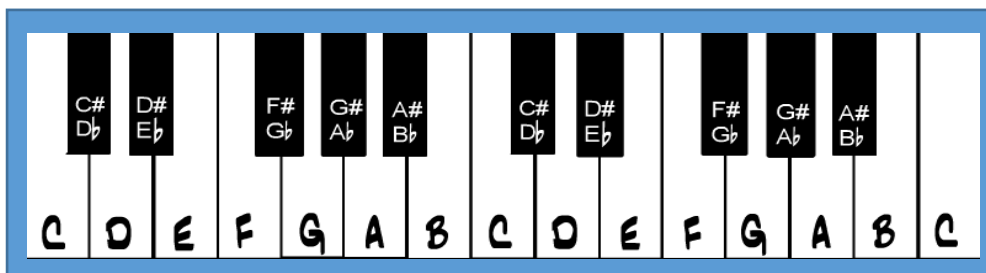
TONALITY



- Name the main key/key signature
- This key is often NOT used on a guitar because.....
.....
.....
- What does MODULATION mean?
.....
.....
- What does RELATED KEYS mean?
.....
.....
- What numbers are the PRIMARY CHORDS?
.....
.....
- What the primary chords in this key?
.....
.....
- What are the main modulations in this key?
.....
.....
- What does PASSING MODULATIONS mean?
.....
.....
- What are the passing modulations in this key?
.....
.....
- What key does the song START in?
- What does TONAL AMBIGUITY mean?
.....
.....
- Find which major/minor chords the song alternates between in these bars:
 - Bars 3-6
 - Bars 44-47
 - Bars 62-63

Harmony

Term	Meaning	Example
Chromaticism		
Block Chords		
Octaves		
Parallel harmonies		
Add chords		



How to work out chords:

.....

.....

G7 =

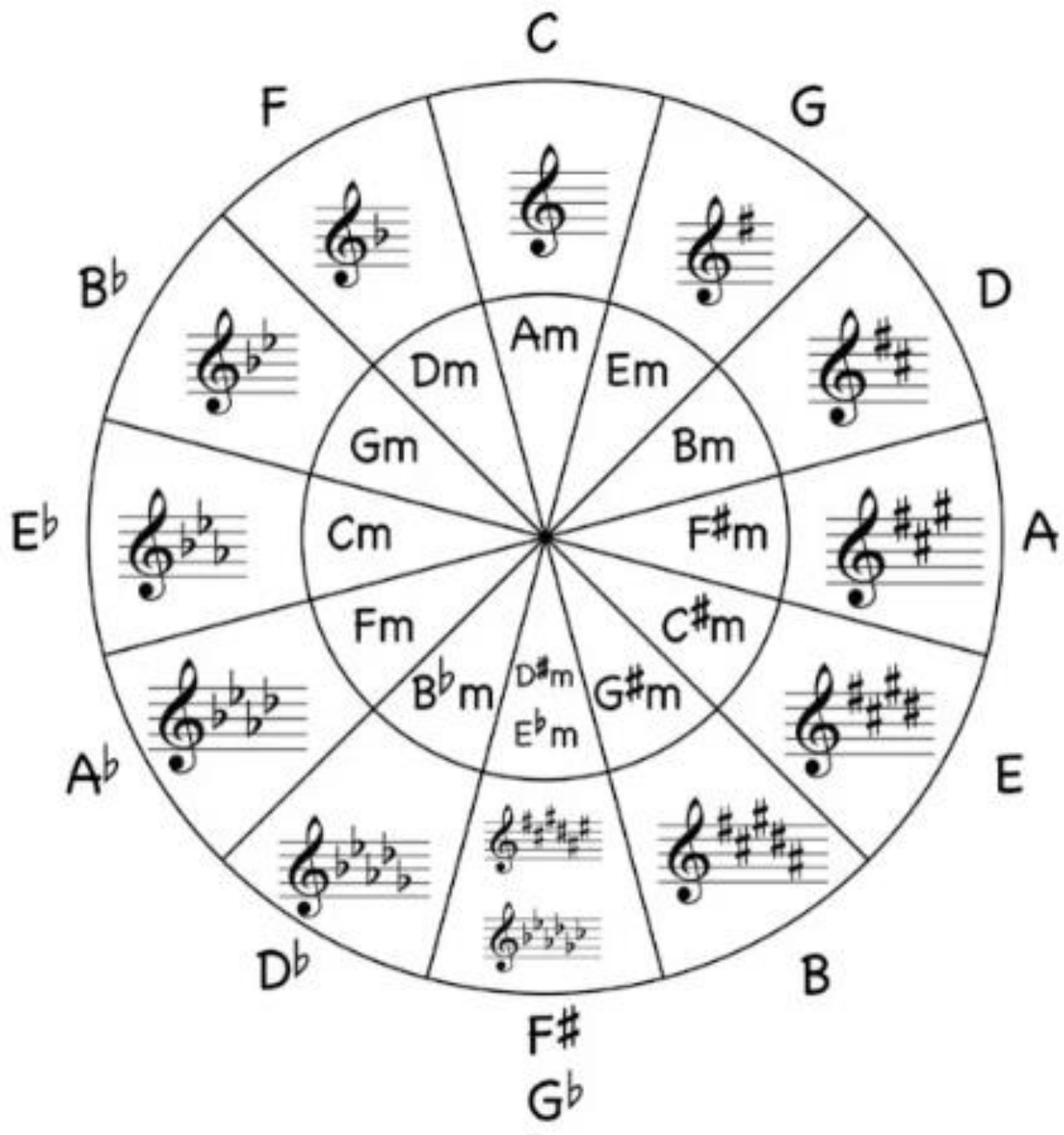
D7 =

A7 =

Bb7 =

Bb6 =

Bb11 =



Fill in the circle of 5ths falling chord sequence and where it can be heard:

--	--	--	--

HARMONY – CADENCES:

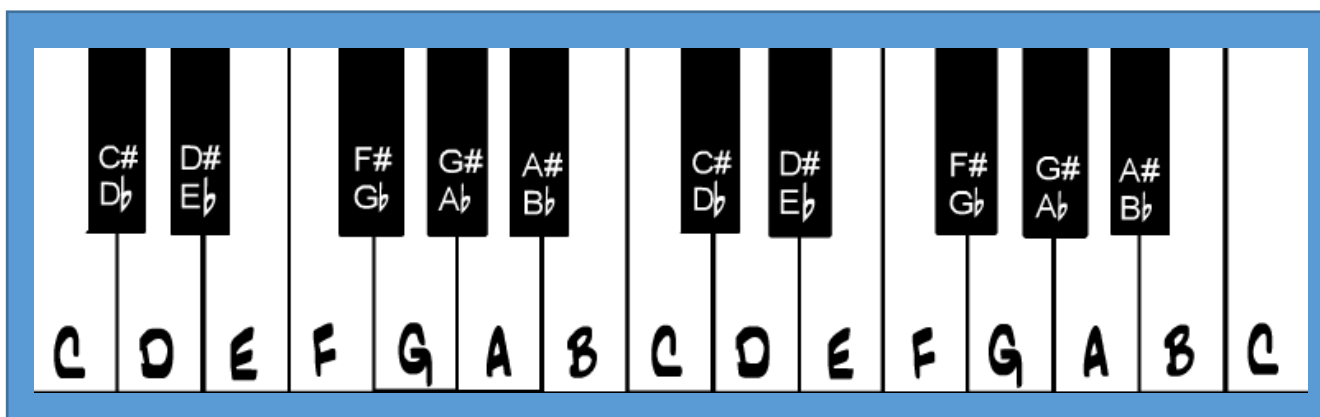
What is a CADENCE?

.....

.....

Cadence	Chords used	How it sounds	Example in Eb = I
	V-I (5-1)	Ta dah! Finished.	
	IV-I (4-1)	'A-men' (monks).	
	I-V (1-5)	More to come.	
	V-VI (5-6)	Sad, ends minor.	

Letter								
Number	I	II	III	IV	V	VI	VII	I



SPOT THE DIFFERENCE

VERSE 1	VERSE 2	VERSE 3

Structure

Texture

Context

Dynamics

Composer:

Instrumentation

Harmony and tonality

Tempo, Metre and rhythm

Melody

'Killer Queen' from *Sheer Heart Attack*

Audio 4

Words and Music by Freddie Mercury

$\text{♩} = 112$

Vocals

Verse 1 Cm

She keeps a Mo - èt et Chan - don_

Piano

Electric Guitars

Drums (finger clicks)

4 B \flat 7 Cm B \flat 7

in her pret - ty ca - bi-net. 'Let them eat cake,'_ she says, just like_ Ma-rie An-toi-nette. A

7

B^b B^bm⁷/D^b A^b A^bm E^b/B^b

built - in re-me-dy for Khrush-chev and Ken-ne-dy, at a-ny time an in - vi - ta - tion

Ooh

Gtr. 1

10

B^b B^b G⁷ Cm

you can't de - cline. Ca - vi - ar and ci - ga - rettes,

13 B^b E^b D⁷ Gm F B^b Dm

Chorus I

well versed in e-ti-quette, ex-tr'or-di-na-ri-ly nice. She's a kill-er queen,

16 Gm Dm Gm A⁷ Dm G⁷ F⁷/A G⁷/B C

gun - pow - der, ge-la-tine, dy-na-mite with a la-ser beam. Gua-ran-teeed to blow your mind.

Ba, ba, ba, ba,

19 B^b A Dm G⁷ C

Oob, re-com-mend - ed at the price, in - sa - tia - ble an ap-pe-tite,

a - ny - time,

22

B \flat F B \flat /F F \sharp B \flat /F F \sharp

Instrumental

wan-na try?

Gtr. 1

Gtr. 3

8va

25

F B \flat E \flat /G F \sharp F B \flat E \flat /G Cm

Verse 2 To a - void com - pli - ca - tions she

28

B^b/C

Cm

B^b/C

E^b

ne - ver kept the same ad - dress, in con - ver - sa - tion she spoke just like a ba - ron - ess.

Gtr. 2

31

Gm/D

E^b/D^b

A^b

A^bm

E^b/B^b

Met a man from Chi - na, went down to Gei - sha Mi - nah, but then a - gain in - ci - dent - 'ly if you're

Ooh A kill - er, a kill - er, she's a

Gtr. 1

34

B^{b11} B^{b7} G⁷ Cm

that way in - clined. Per - fume came nat - 'ral - ly from Pa - ris, for

Kill - er Queen. Nat - 'ral - ly.

37

B^b F^b D⁷ Gm F B^b Dm

cars she could - n't care less, fas - ti - di - ous and pre - cise... She's a kill - er queen,

Chorus 2

40

Gm Dm Gm A7 Dm G7 F/A G7/B C

gun - pow - der, ge-la-tine, dy-na-mite with a la-ser beam, gua-ran-teeed to blow your mind.

Ba, ba, ba, ba,

43

Bb A Dm A Dm

a-ny-time,

Guitar Solo

46 G Cm G Cm F#11

Gtr. 1
Gtr. 3
Gtr. 4

49 Cm

Gtr. 1

52 Bb7/D Cm Bb7/C

Gtr. 1
8va

55 Cm/Bb Gm/D Eb7/Db Ab Abm Eb/Bb

⑤

Gtr. 2 *acc*

Gtr. 3

58 Bb11 Bb7 Eb/Bb Bb11 Bb7 Verse 3

Drop of a

⑤

⑤

62 G7 Cm G7 Cm Bb Eb

hat she's as will-ing as, — play - ful as a pus-sy cat, — then mo-men-ta - ri-ly out of ac - tion,

Ooh,

Gtr. 2
w/ wah--|

Gtr. 3
w/ wah--|

Gtr. 4
w/ wah--|

65 Db Eb D7 Gm F Bb F

tem - po-ra-ri-ly out of gas, — to ab - so-lute - ly drive

ooh, — da, — da, — drive you wild, —

Gtr. 1

68 B^bm F B^b Dm

Chorus 3

She's all out to get you. She's a kill-er queen,

71 Gm Dm Gm A⁷ Dm G⁷ F⁷/A G⁷/B C

gun - pow - der, ge-la-tine, dy-na-mite with a la-ser beam, gua-ran-teeed to blow your mind.

Ba, ba, ba, ha,

74

B^b A Dm G C

Ooh, re-com-mend - ed at the price, in - sa - tis - ble an ap - pe - tite,

a - ny - time,

77

B^b F B^b/F F^{II} F B^b E^b/G

wan-na try? You wan-na try...?

Outro

Gtr. 1
Gtr. 2

Repeat to fade